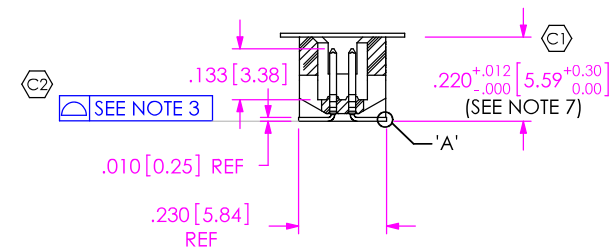
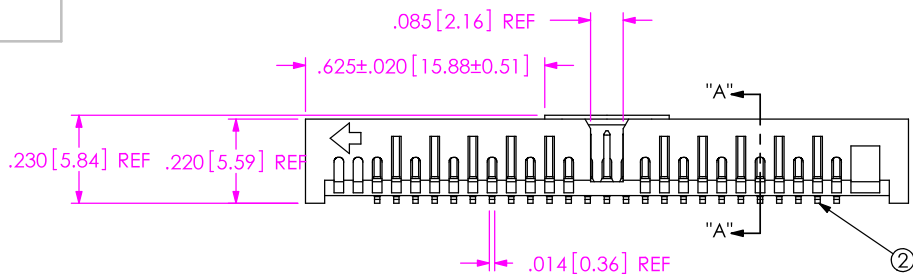
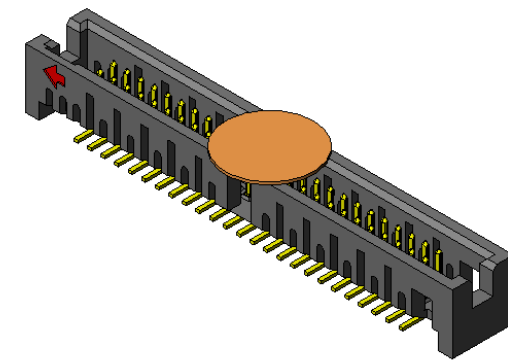
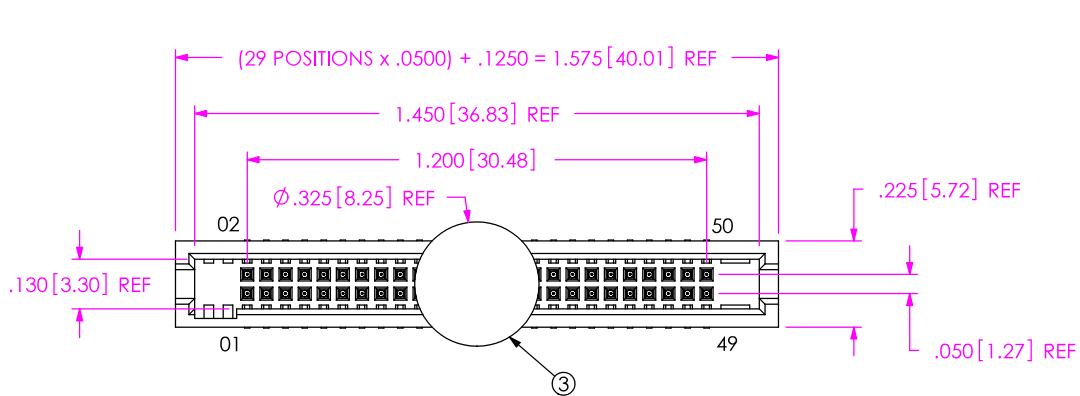
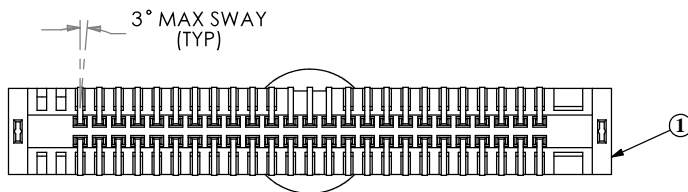


REVISION

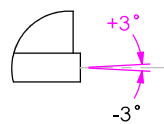
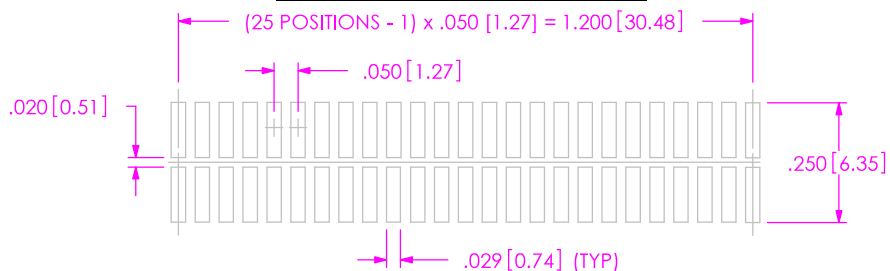
A	SK	D MCCARTIN
2/21/2002	ECN-16331	
ADD METRIC TO TITLE, NOTES, AND FOOTPRINT POSITION FORMULA. ADD MATERIAL FOR ITEM-4 CORRECT PACKAGING VIEW FROM THROUGH HOLE PART TO CORRECT SURFACE MOUNT PART. RELEASE FOR PRODUCTION.		
B	BH	J FREEMAN
1/31/2005	ECN-43009	
CHANGE KAPTON IN BOM FROM K-500-300 TO K-850-650.		
C	TW	M BOONE
11/30/2006	ECN-68207	
NOTE 7: CHG FROM 'FLUSH TO .005...' TO 'FLUSH TO .012...'; SECTION A-A, ADD REF TO TAIL DIM		
D	BR	C GRANTZ
2/12/2007	ECN-71368	
BOM: CHG T&R-ASP75MS TO CT-ASP75MS; CHG T-1R16-01-S-2 NEW TO T-1R16-01-S-2		



SECTION "A"-"A"
SCALE 2 : 1



RECOMMENDED PCB LAYOUT



DETAIL 'A'
SCALE 15 : 1

NOTES:

1. USE CUSTOM INSULATOR ASP-81730-02.
2. Ⓢ REPRESENTS A CRITICAL DIMENSION.
3. COPLANARITY TO BE WITHIN .006 [.15].
4. BURR ALLOWANCE: .0015 [.004] MAX.
5. MINIMUM PUSHOUT FORCE: .5 LB.
6. MAXIMUM ALLOWABLE BOW: .002 [.05] INCH/INCH AFTER ASSEMBLY.
7. FLUSH TO .012 [.304] MAX OFFSET FROM BOTTOM OF BODY MEASURED FROM BEND.
8. PARTS TO BE PACKAGED IN TAPE AND REEL.

UNLESS OTHERWISE SPECIFIED, DIMENSIONS ARE IN INCHES.
TOLERANCES ARE:
DECIMALS .XX: ±.01
.XXX: ±.005
.XXXX: ±.0020

PROPRIETARY NOTE

THIS DOCUMENT CONTAINS INFORMATION CONFIDENTIAL AND PROPRIETARY TO SAMTEC, INC. AND SHALL NOT BE REPRODUCED OR TRANSFERRED TO OTHER DOCUMENTS OR DISCLOSED TO OTHERS OR USED FOR ANY PURPOSE OTHER THAN THAT WHICH IT WAS OBTAINED WITHOUT THE EXPRESSED WRITTEN CONSENT OF SAMTEC, INC.

SAMTEC

520 PARK EAST BLVD, NEW ALBANY, IN 47150
* PHONE: 812.944.6733 FAX: 812.948.5047
e-Mail: INFO@SAMTEC.COM CODE: 55322

DO NOT SCALE DRAWING SHEET SCALE: 3:1

PLATING:
CONTACT AREA: .000030 GOLD OVER .000050 NICKEL
REMAINDER: .000200 REF TIN OVER .000050 NICKEL

DESCRIPTION:
.050 [1.27] C.L. TERMINAL STRIP ASSEMBLY

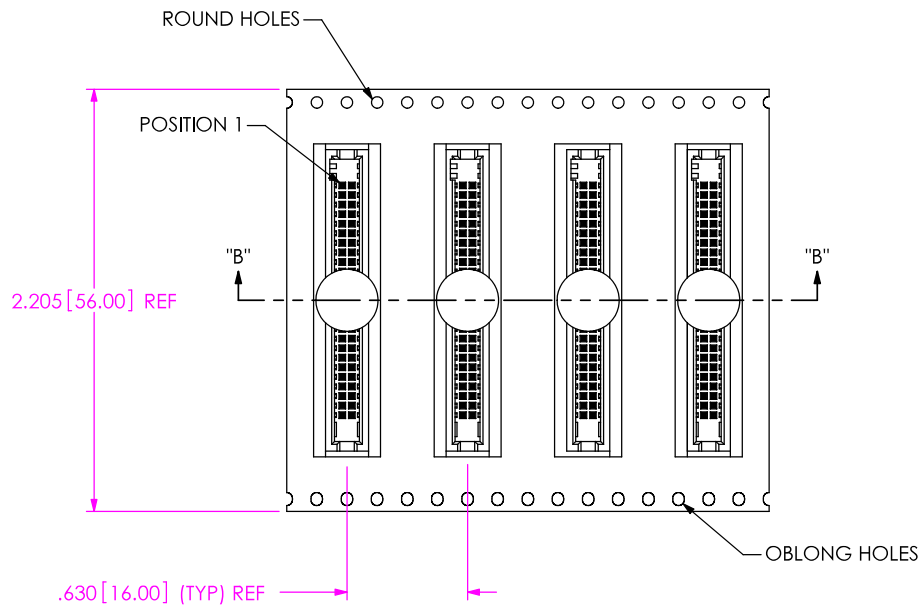
DWG. NO. **ASP-67923-02**

BY: ERIC M. 05/21/01 SHEET 1 OF 2



ITEM NO.	PART NUMBER	QUANTITY	MATERIAL
1	ASP-81730-02	1.00000	VECTRA E130i, COLOR: BLACK
2	T-1R16-01-S-2	50.0000	PHOS BRONZE, 510 HALF HARD TEMPER
3	K-850-650	0.50000	POLYIMIDE FILM (KAPTON)
4	CT-ASP757MS	0.00235	CONDUCTIVE POLYMER





SECTION "B"- "B"

USER DIRECTION OF UNREELING
(POCKET NOT DETAILED) →

PACKAGING VIEW

PROPRIETARY NOTE

THIS DOCUMENT CONTAINS INFORMATION CONFIDENTIAL AND PROPRIETARY TO SAMTEC, INC. AND SHALL NOT BE REPRODUCED OR TRANSFERRED TO OTHER DOCUMENTS OR DISCLOSED TO OTHERS OR USED FOR ANY PURPOSE OTHER THAN THAT WHICH IT WAS OBTAINED WITHOUT THE EXPRESSED WRITTEN CONSENT OF SAMTEC, INC.

DO NOT SCALE DRAWING

SHEET SCALE: 1:1

SAMTEC

520 PARK EAST BLVD, NEW ALBANY, IN 47150
 * PHONE: 812.944.6733 FAX: 812.948.5047
 e-Mail: INFO@SAMTEC.COM CODE: 55322

DESCRIPTION:
 .050 [1.27] C.L. TERMINAL STRIP ASSEMBLY

DWG. NO.
ASP-67923-02

BY: ERIC M. 05/21/01 SHEET 2 OF 2