

DO NOT SCALE FROM THIS PRINT

DESIGNED & DIMENSIONED IN MILLIMETERS [INCHES]

MMCX-P-C-X-RA-CA1  
 GENDER -P: PLUG  
 TYPE -C: CABLE  
 TERMINATION -CA1: CABLE (RG174 OR RG316)  
 ORIENTATION -RA: RIGHT ANGLE

PLATING SPECIFICATION  
 -H: HEAVY GOLD (SEE NOTE 7&8)  
 (MCX-FER-002-F)  
 (MMCX-CAP-001-F)  
 (MMCX-INS-001)  
 (SUB-MMCX-P-C-H-RA-CA1)

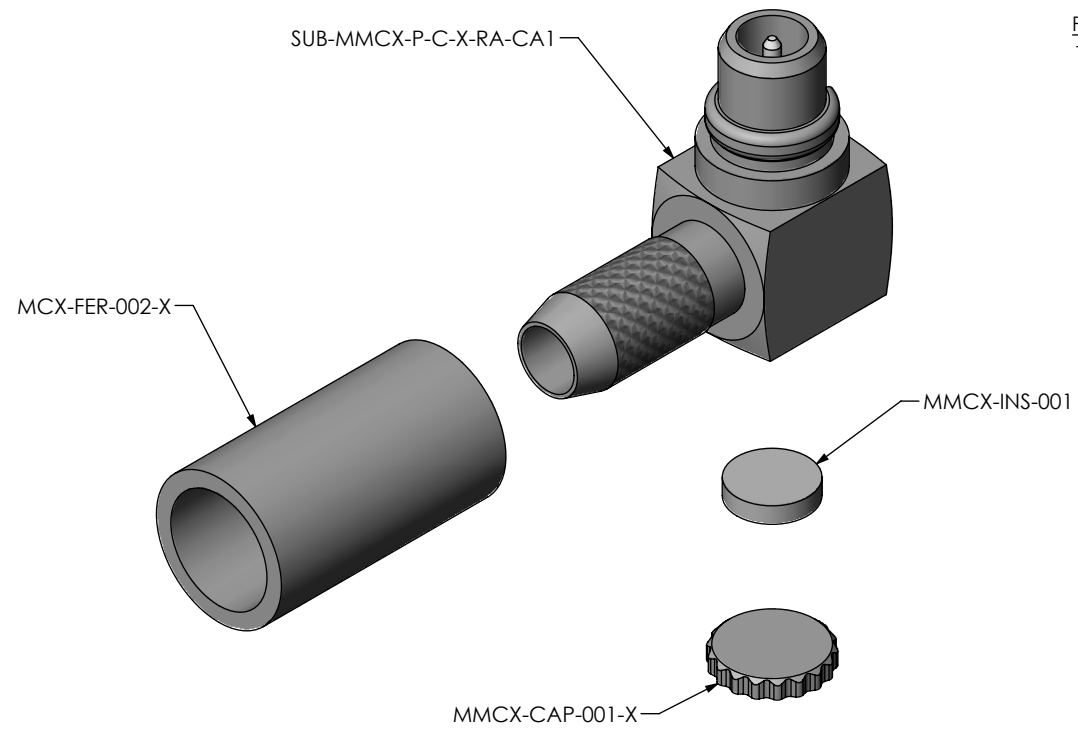
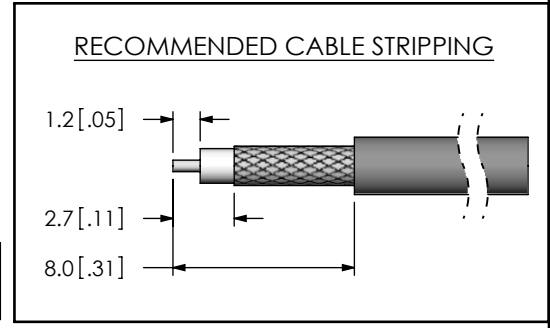


FIG.1  
 MMCX-P-C-H-RA-CA1 SHOWN



- NOTES:
1. REPRESENTS A CRITICAL DIMENSION.
  2. CENTER CONTACT PUSHOUT FORCE: 26.69 N [6LB] MIN
  3. SEE SHEET 3 FOR TERMINATION INFORMATION.
  4. NOTE DELETED.
  5. PRODUCT TO BE PACKAGED PER PACKAGING STANDARD CO-HD-WI-3040-M.
  6. RoHS COMPLIANT.
  7. PLATING: -F: .00003" MIN GOLD OVER .000050" MIN NICKEL.  
 -H: .000030" MIN GOLD OVER .000050" MIN NICKEL.
  8. ASSEMBLY PLATING DESIGNATIONS:  
 -H: (CENTER CONTACT) -H  
 (OUTER CONTACT) -F  
 (REMAINING METAL PARTS) -F

**THIS PRODUCT MANUFACTURED WITH LEAD-FREE PROCESSING**

F:\DWG\MISC\MKTG\MMCX-P-C-X-RA-CA1-MKT.SLDDRW

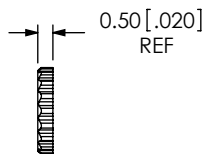
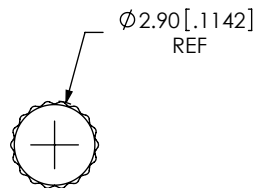
UNLESS OTHERWISE SPECIFIED, DIMENSIONS ARE IN MILLIMETERS [INCHES]. TOLERANCES ARE:  
 DECIMALS ANGLES  
 .X: ±0.3 [.01] 2°  
 .XX: ±0.13 [.005]  
 .XXX: ±0.051 [.0020]

PROPRIETARY NOTE  
 THIS DOCUMENT CONTAINS INFORMATION CONFIDENTIAL AND PROPRIETARY TO SAMTEC, INC. AND SHALL NOT BE REPRODUCED OR TRANSFERRED TO OTHER DOCUMENTS OR DISCLOSED TO OTHERS OR USED FOR ANY PURPOSE OTHER THAN THAT WHICH IT WAS OBTAINED WITHOUT THE EXPRESSED WRITTEN CONSENT OF SAMTEC, INC.

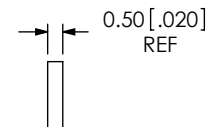
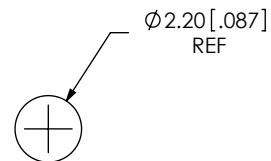
**samtec**  
 520 PARK EAST BLVD, NEW ALBANY, IN 47150  
 PHONE: 812-944-6733 FAX: 812-948-5047  
 e-Mail: info@SAMTEC.com code 55322

MATERIAL: DO NOT SCALE DRAWING SHEET SCALE: 1:0.166667  
 SHELL, FERRULE, CAP: BRASS  
 CONTACT: BRASS  
 DIELECTRIC: PTFE

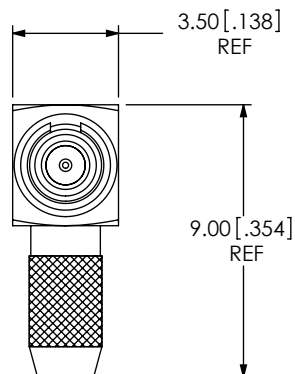
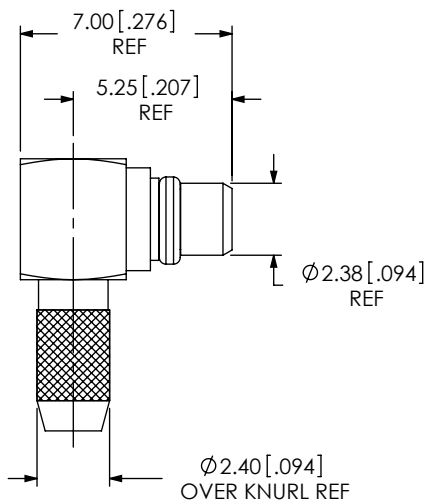
DESCRIPTION:  
 MMCX R/A CABLE PLUG, RG174 & RG316- 50 OHM  
 DWG. NO.  
**MMCX-P-C-X-RA-CA1**  
 BY: R MUSSER 02/06/2008 SHEET 1 OF 3



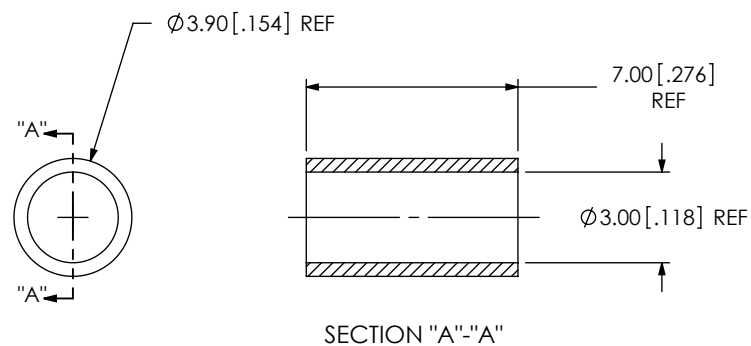
SAMTEC PART NUMBER	ITEM
MMCX-CAP-001-X	CAP



SAMTEC PART NUMBER	ITEM
MMCX-INS-001	INSULATOR



SAMTEC PART NUMBER	ITEM
SUB-MMCX-P-C-X-RA-CA1	SUB ASSEMBLY



SAMTEC PART NUMBER	ITEM
MCX-FER-002-X	OUTER FERRULE

F:\DWG\MISC\MKTG\MMCX-P-C-X-RA-CA1-MKT.SLDDRW

**PROPRIETARY NOTE**  
 THIS DOCUMENT CONTAINS INFORMATION CONFIDENTIAL AND PROPRIETARY TO SAMTEC, INC. AND SHALL NOT BE REPRODUCED OR TRANSFERRED TO OTHER DOCUMENTS OR DISCLOSED TO OTHERS OR USED FOR ANY PURPOSE OTHER THAN THAT WHICH IT WAS OBTAINED WITHOUT THE EXPRESSED WRITTEN CONSENT OF SAMTEC, INC.

DO NOT SCALE DRAWING

SHEET SCALE: 4:1

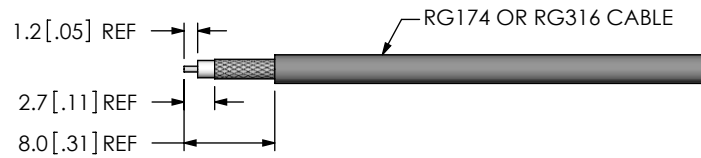


520 PARK EAST BLVD, NEW ALBANY, IN 47150  
 PHONE: 812-944-6733 FAX: 812-948-5047  
 e-Mail: info@SAMTEC.com code 55322

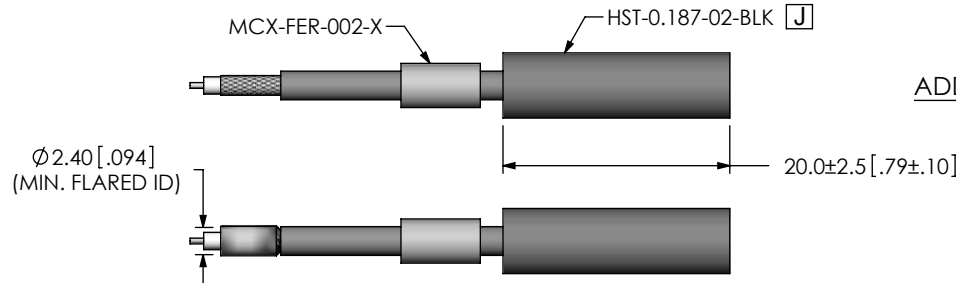
DESCRIPTION:  
 MMCX R/A CABLE PLUG, RG174 & RG316- 50 OHM

DWG. NO.  
**MMCX-P-C-X-RA-CA1**

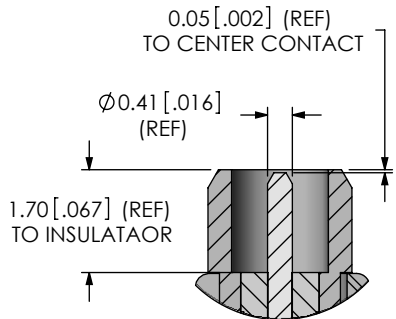
BY: R MUSSER 02/06/2008 SHEET 2 OF 3



STRIP AND TIN INNER CONDUCTOR

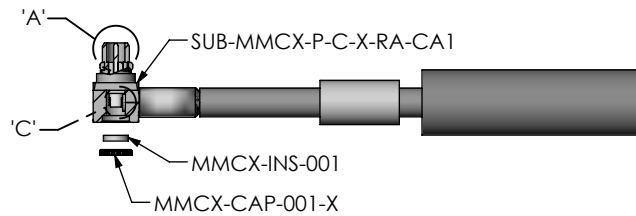


ADD HEAT SHRINK TUBE AND FERRULE

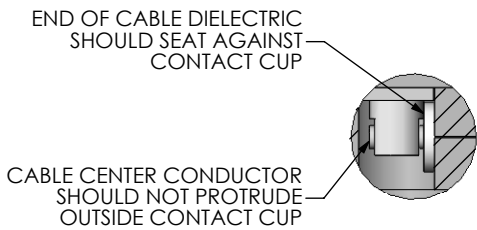


DETAIL 'A'  
SCALE 8 : 1

FLARE SHIELD

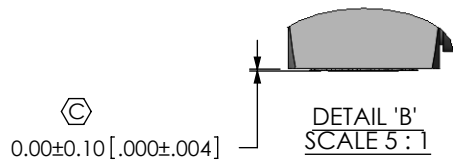


ADD SUB-MMCX-P-C-X-RA-CA1 & SOLDER SIGNAL PIN



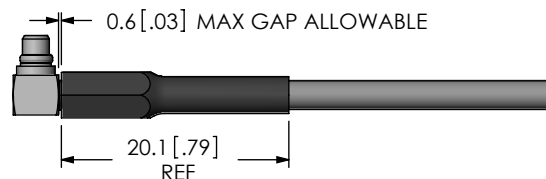
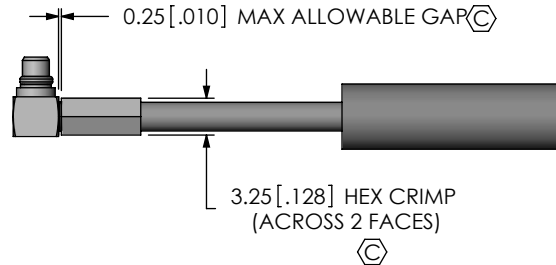
DETAIL 'C'  
SCALE 6 : 1

INSERT INSULATOR AND CAP



DETAIL 'B'  
SCALE 5 : 1

CRIMP FERRULE  
(USE RF CRIMP HAND TOOL # CAT-HT-126667-21)



APPLY HEAT SHRINK TUBING

F:\DWG\MISC\MKTG\MMCX-P-C-X-RA-CA1-MKT.SLDDRW

**PROPRIETARY NOTE**

THIS DOCUMENT CONTAINS INFORMATION CONFIDENTIAL AND PROPRIETARY TO SAMTEC, INC. AND SHALL NOT BE REPRODUCED OR TRANSFERRED TO OTHER DOCUMENTS OR DISCLOSED TO OTHERS OR USED FOR ANY PURPOSE OTHER THAN THAT WHICH IT WAS OBTAINED WITHOUT THE EXPRESSED WRITTEN CONSENT OF SAMTEC, INC.

DO NOT SCALE DRAWING

SHEET SCALE: 1:0.666667



520 PARK EAST BLVD, NEW ALBANY, IN 47150  
PHONE: 812-944-6733 FAX: 812-948-5047  
e-Mail: info@SAMTEC.com code 55322

DESCRIPTION:  
MMCX R/A CABLE PLUG, RG174 & RG316- 50 OHM

DWG. NO.  
**MMCX-P-C-X-RA-CA1**

BY: R MUSSER 02/06/2008 SHEET 3 OF 3