

DO NOT SCALE FROM THIS PRINT

DESIGNED & DIMENSIONED IN MILLIMETERS [INCHES]

NTPE-J-C-XX-ST-BH1

GENDER  
-J: JACK

TYPE  
-C: CABLE

TERMINATION  
-BH1: BULKHEAD (RG174 OR RG316)

ORIENTATION  
-ST: STRAIGHT

PLATING SPECIFICATION  
-HN: HEAVY GOLD/NICKEL (SEE NOTE 6 & 7)  
(SMA-FER-001-N)  
(NTPE-J-C-N-ST-BH1-CBDY)  
(NTPE-INS-001)  
(NTPE-J-C-H-ST-BH1-SKT)  
(SUB-NTPE-J-C-N-ST-BH1)  
(NTPE-GKT-001)  
(NTPE-LWAS-001-N)  
(NTPE-NUT-001-N)

-GN: GOLD/NICKEL (SEE NOTE 6 & 7)  
(SMA-FER-001-N)  
(NTPE-J-C-N-ST-BH1-CBDY)  
(NTPE-INS-001)  
(NTPE-J-C-G-ST-BH1-SKT)  
(SUB-NTPE-J-C-N-ST-BH1)  
(NTPE-GKT-001)  
(NTPE-LWAS-001-N)  
(NTPE-NUT-001-N)

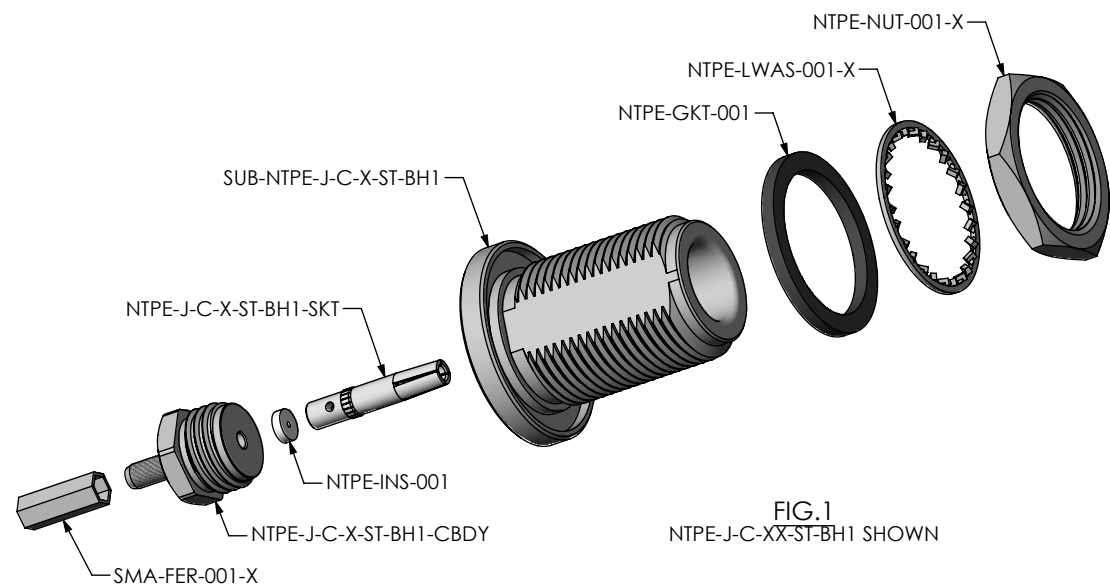
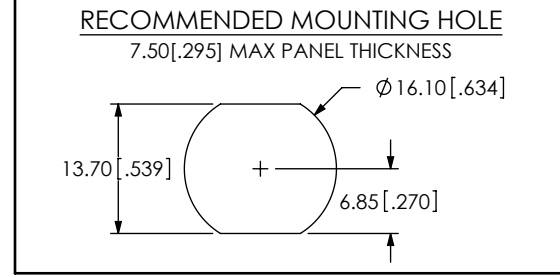
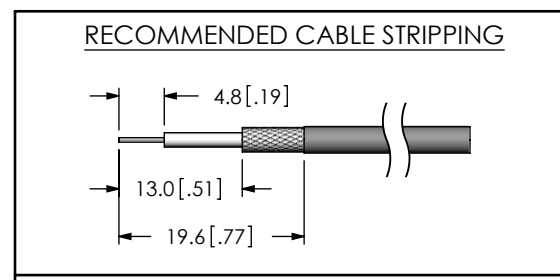


FIG.1  
NTPE-J-C-XX-ST-BH1 SHOWN



- NOTES:
- Ⓢ REPRESENTS A CRITICAL DIMENSION.
  - SEE SHEET 3 FOR TERMINATION INFORMATION.
  - NOTE DELETED.
  - PRODUCT TO BE PACKAGED PER PACKAGING STANDARD CO-HD-WI-3040-M.
  - RoHS COMPLIANT.
  - PLATING: -H: 0.000030" MIN. GOLD OVER 0.000050" MIN. NICKEL.  
-G: 0.000010" MIN. GOLD OVER 0.000050" MIN. NICKEL.  
-N: 0.000100" MIN. NICKEL.
  - ASSEMBLY PLATING DESIGNATIONS:  
-HN: (CENTER CONTACT)-H  
(OUTER CONTACT)-N  
(REMAINING METAL PARTS)-N  
-GN: (CENTER CONTACT)-G  
(OUTER CONTACT)-N  
(REMAINING METAL PARTS)-N

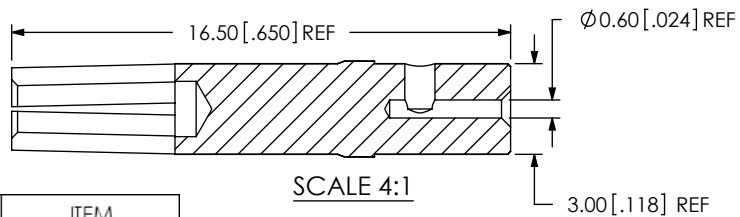
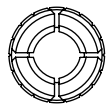
**THIS PRODUCT MANUFACTURED WITH LEAD-FREE PROCESSING**

F:\DWG\MISC\MKTG\NTPE-J-C-XX-ST-BH1-MKT.SLDDRW

UNLESS OTHERWISE SPECIFIED DIMENSIONS ARE IN MILLIMETERS [INCHES]	PROPRIETARY NOTE THIS DOCUMENT CONTAINS INFORMATION CONFIDENTIAL AND PROPRIETARY TO SAMTEC, INC. AND SHALL NOT BE REPRODUCED OR TRANSFERRED TO OTHER DOCUMENTS OR DISCLOSED TO OTHERS OR USED FOR ANY PURPOSE OTHER THAN THAT WHICH IT WAS OBTAINED WITHOUT THE EXPRESSED WRITTEN CONSENT OF SAMTEC, INC.
TOLERANCES ARE: DECIMALS ANGLES .X: ±0.3 [.01] 2° .XX: ±0.13 [.005] .XXX: ±0.051 [.0020]	
MATERIAL: DO NOT SCALE DRAWING SHEET SCALE: 1.25:1 SHELLS, FERRULES, NUTS, WASHERS: BRASS CONTACT: COPPER ALLOY DIELECTRIC: PTFE GASKET: SILICONE	DESCRIPTION: N TYPE STRAIGHT BULKHEAD CABLE JACK, RG174 & RG316 - 50 OHM DWG. NO. <b>NTPE-J-C-XX-ST-BH1</b>
BY: R MUSSER 09-09-2010	SHEET 1 OF 3

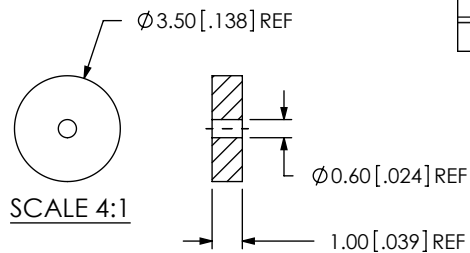
520 PARK EAST BLVD. NEW ALBANY, IN 47150  
PHONE: 812-944-6733 FAX: 812-948-5047  
e-Mail: info@SAMTEC.com code 55322

REVISION K



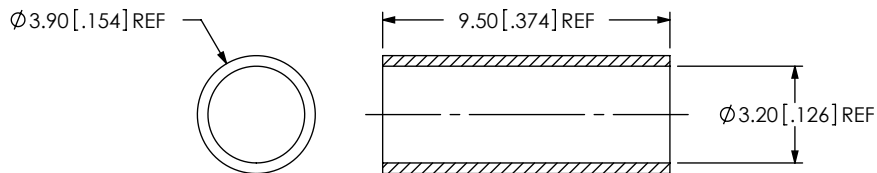
SCALE 4:1

SAMTEC PART NUMBER	ITEM
NTPE-J-C-X-ST-BH1-SKT	SOCKET



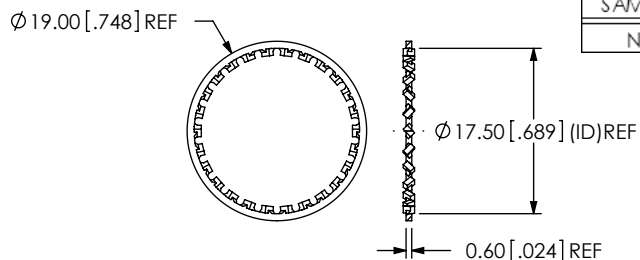
SCALE 4:1

SAMTEC PART NUMBER	ITEM
NTPE-J-C-ST-BH1-INS	INSULATOR

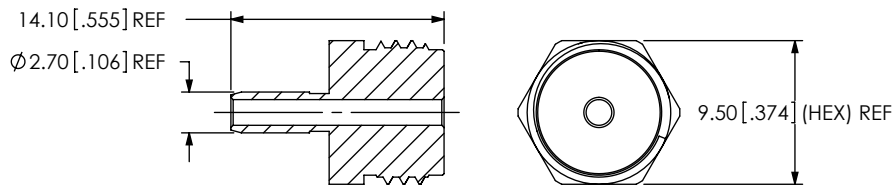


SCALE 4:1

SAMTEC PART NUMBER	ITEM
SMA-FER-001-X	FERRULE

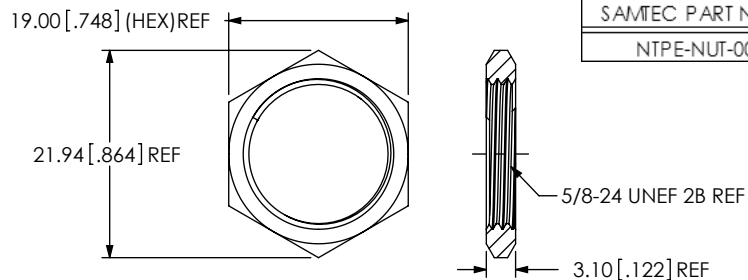


SAMTEC PART NUMBER	ITEM
NTPE-LWAS-001-X	LOCK WASHER

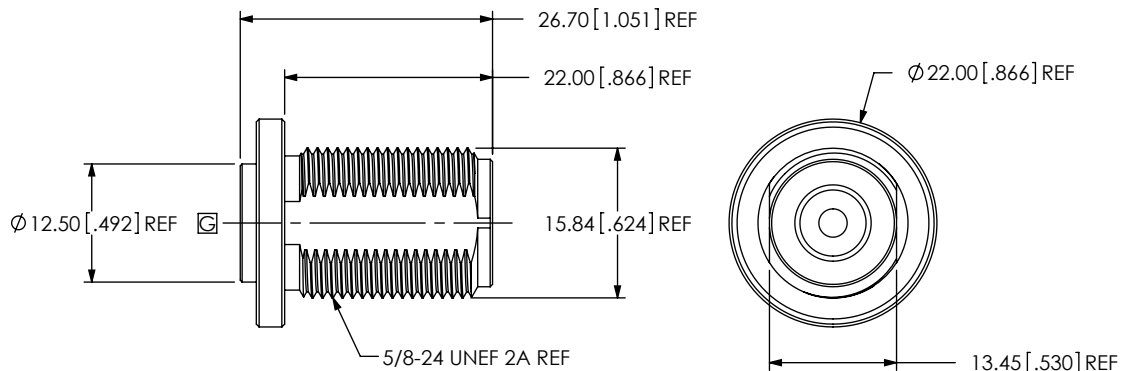


SCALE 2:1

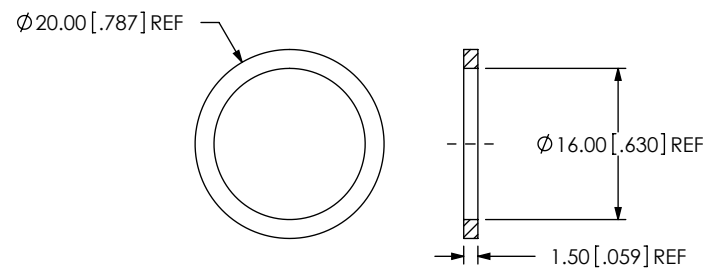
SAMTEC PART NUMBER	ITEM
NTPE-J-C-X-ST-BH1-CBDY	CABLE BODY



SAMTEC PART NUMBER	ITEM
NTPE-NUT-001-X	HEX NUT



SAMTEC PART NUMBER	ITEM
SUB-NTPE-J-C-X-ST-BH1	SUB ASSEMBLY



SAMTEC PART NUMBER	ITEM
NTPE-GKT-001	GASKET

F:\DWG\MISC\MKTG\NTPE-J-C-XX-ST-BH1-MKT.SLDDRW

**PROPRIETARY NOTE**  
 THIS DOCUMENT CONTAINS INFORMATION CONFIDENTIAL AND PROPRIETARY TO SAMTEC, INC. AND SHALL NOT BE REPRODUCED OR TRANSFERRED TO OTHER DOCUMENTS OR DISCLOSED TO OTHERS OR USED FOR ANY PURPOSE OTHER THAN THAT WHICH IT WAS OBTAINED WITHOUT THE EXPRESSED WRITTEN CONSENT OF SAMTEC, INC.



520 PARK EAST BLVD, NEW ALBANY, IN 47150  
 PHONE: 812-944-6733 FAX: 812-948-5047  
 e-Mail: info@SAMTEC.com code 55322

DO NOT SCALE DRAWING

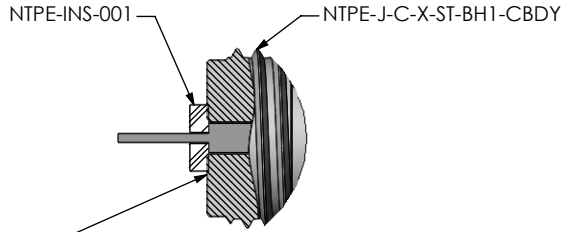
SHEET SCALE: 1.25:1

DESCRIPTION:  
 N TYPE STRAIGHT BULKHEAD CABLE JACK, RG174 & RG316 - 50 OHM

DWG. NO.

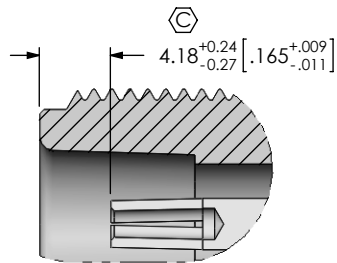
NTPE-J-C-XX-ST-BH1

BY: R MUSSER 09-09-2010 SHEET 2 OF 3

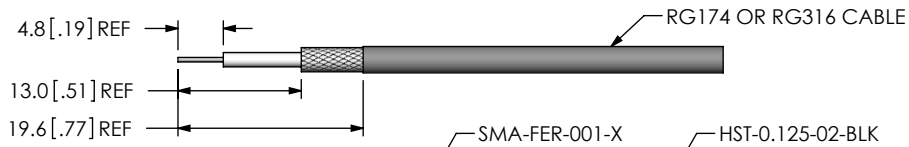


NTPE-INS-001 & NTPE-J-C-X-ST-BH1-CBDY TO BE FLUSH WITH CABLE DIELECTRIC

DETAIL 'B'  
SCALE 2.5 : 1



DETAIL 'A'  
SCALE 2.25 : 1

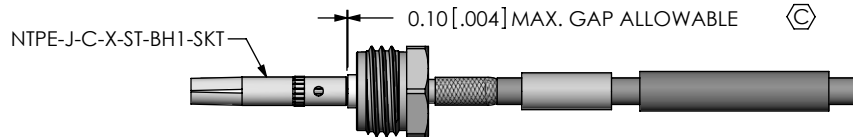
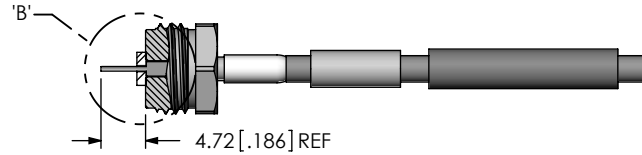
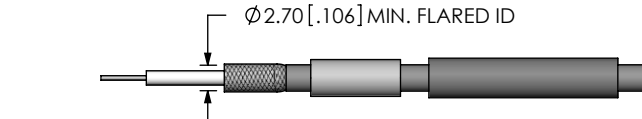


STRIP AND TIN INNER CONDUCTOR

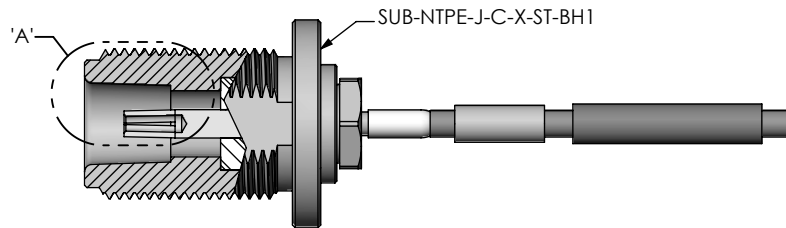
ADD HEAT SHRINK TUBE AND FERRULE

FLARE SHIELD

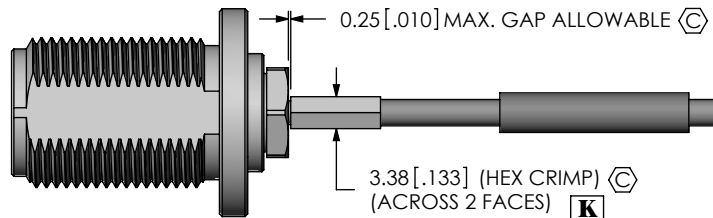
ADD NTPE-J-C-X-ST-BH1-CBDY  
AND NTPE-INS-001



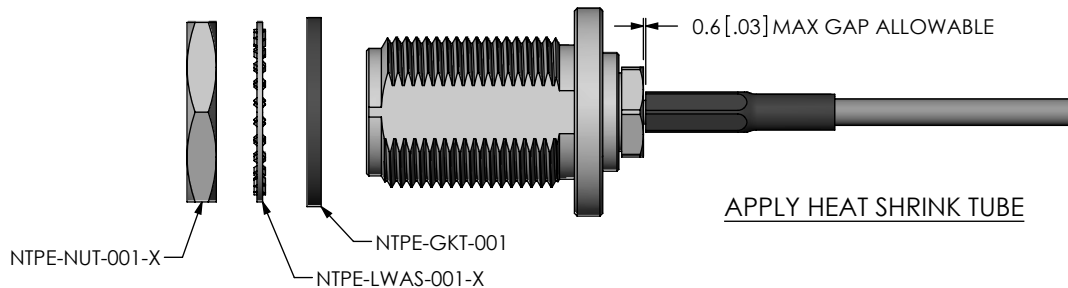
SOLDER SIGNAL SOCKET



ADD SUB-NTPE-J-C-X-ST-BH1  
(TORQUE TO 30 INCH LBS)



CRIMP FERRULE  
(USE RF CRIMP HAND TOOL #CAT-HT-126667-21 OR EQUIVALENT)  
(USE .128" HEX DIE) **K**



APPLY HEAT SHRINK TUBE

PROPRIETARY NOTE

THIS DOCUMENT CONTAINS INFORMATION CONFIDENTIAL AND PROPRIETARY TO SAMTEC, INC. AND SHALL NOT BE REPRODUCED OR TRANSFERRED TO OTHER DOCUMENTS OR DISCLOSED TO OTHERS OR USED FOR ANY PURPOSE OTHER THAN THAT WHICH IT WAS OBTAINED WITHOUT THE EXPRESSED WRITTEN CONSENT OF SAMTEC, INC.



520 PARK EAST BLVD, NEW ALBANY, IN 47150  
PHONE: 812-944-6733 FAX: 812-948-5047  
e-Mail: info@SAMTEC.com code 55322

DO NOT SCALE DRAWING

SHEET SCALE: 1.25:1

DESCRIPTION:  
N TYPE STRAIGHT BULKHEAD CABLE JACK, RG174 & RG316 - 50 OHM

DWG. NO.

NTPE-J-C-XX-ST-BH1

BY: R MUSSER

09-09-2010

SHEET 3 OF 3