

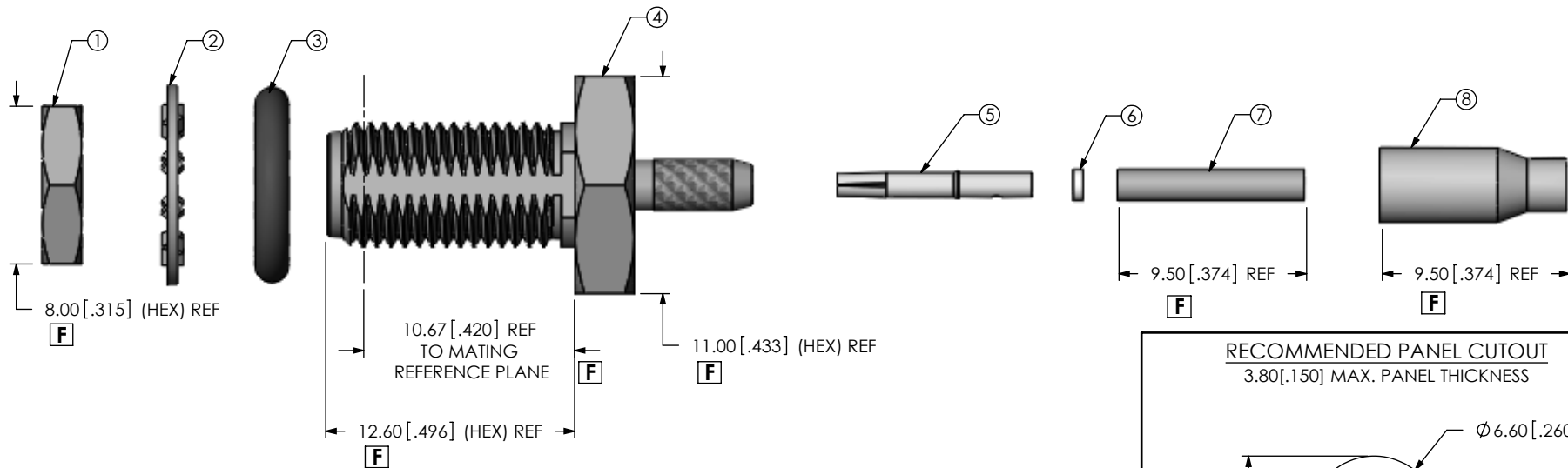
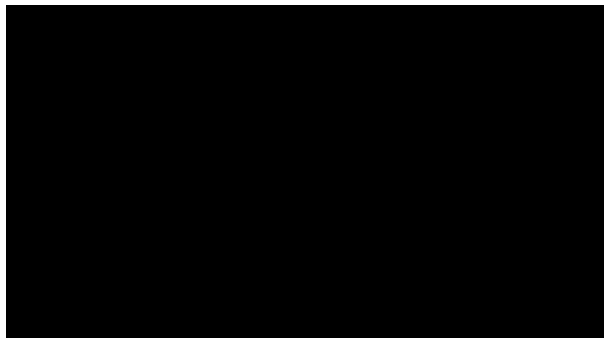
**THIS PRODUCT MANUFACTURED WITH LEAD-FREE PROCESSING**

**DESIGNED & DIMENSIONED IN MILLIMETERS [INCHES]**

**SMA-J-C-X-ST-SB2**

GENDER -J: JACK  
 TYPE -C: CABLE  
 TERMINATION -SB2: SEALED BULKHEAD (RG178)  
 ORIENTATION -ST: STRAIGHT  
 PLATING SPECIFICATION -H: 30µ" GOLD CENTER CONTACT, 3µ" GOLD OUTER CONTACT (SEE TABLE 1)

DO NOT SCALE FROM THIS PRINT



**F**

NOTES:

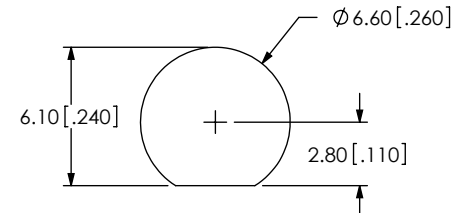
1. **F** REPRESENTS A CRITICAL DIMENSION.
2. NOTE DELETED.
3. PRODUCT TO BE PACKAGED PER PACKING STANDARD CO-HD-WI-3040-M.
4. NOTE DELETED.

UNLESS OTHERWISE SPECIFIED, DIMENSIONS ARE IN MILLIMETERS. TOLERANCES ARE:  
 DECIMALS ANGLES  
 X.X: ±0.3 [.01] 5°  
 X.XX: ±0.13 [.005]  
 X.XXX: ±0.051 [.0020]

**PROPRIETARY NOTE**

THIS DOCUMENT CONTAINS INFORMATION CONFIDENTIAL AND PROPRIETARY TO SAMTEC, INC. AND SHALL NOT BE REPRODUCED OR TRANSFERRED TO OTHER DOCUMENTS OR DISCLOSED TO OTHERS OR USED FOR ANY PURPOSE OTHER THAN THAT WHICH IT WAS OBTAINED WITHOUT THE EXPRESSED WRITTEN CONSENT OF SAMTEC, INC.

**RECOMMENDED PANEL CUTOUT**  
 3.80 [.150] MAX. PANEL THICKNESS



**MATERIAL:** DO NOT SCALE DRAWING SHEET SCALE: 3:1

SOCKET: BeCu  
 BODY: PHOS BRONZE  
 INSULATOR: PTFE

DESCRIPTION:  
 SMA STR JACK S BULKHEAD, RG178- 50 OHM

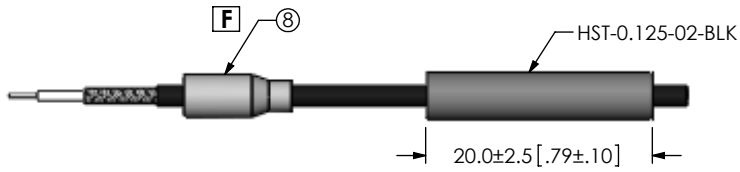
DWG. NO. **SMA-J-C-X-ST-SB2**

BY: R MUSSER 04/05/2009 SHEET 1 OF 2

REVISION F



IN PROCESS 1  
STRIP AND TIN INNER AND  
OUTER CONDUCTOR



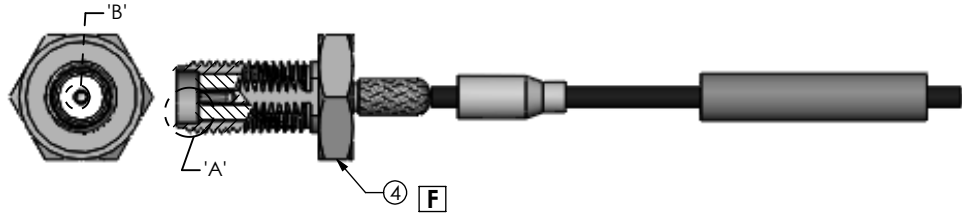
IN-PROCESS 2  
ADD HEAT SHRINK  
TUBE & FERRULE



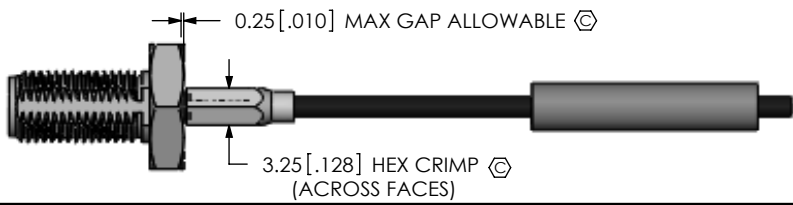
IN-PROCESS 3  
FLARE SHIELD, ADD INNER  
FERRULE & INSULATOR



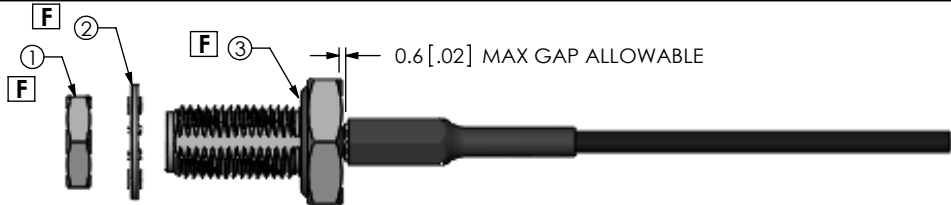
IN-PROCESS 4  
SOLDER SIGNAL SOCKET



IN-PROCESS 5  
ADD SUB ASSEMBLY

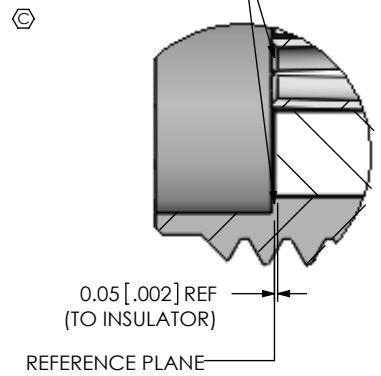


IN-PROCESS 6  
CRIMP FERRULE  
(USE CRIMP HAND TOOL  
#CAT-HT-126667-21  
OR EQUIVALENT)  
(USE .128" HEX DIE)

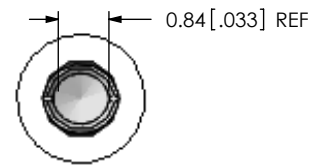


IN PROCESS 7  
APPLY HEAT SHRINK TUBING  
& ADD GASKET

TIP OF CONTACT TO BE FLUSH  
WITH REFERENCE PLANE  
OR RECESSED 0.10 [.004] MAX.



DETAIL 'A'  
SCALE 8:1



DETAIL 'B'  
SCALE 8:1

F

F:\DWG\MISC\MKTG\SMA-J-C-X-ST-SB2-MKT.SLDDRW

PROPRIETARY NOTE  
THIS DOCUMENT CONTAINS INFORMATION  
CONFIDENTIAL AND PROPRIETARY TO  
SAMTEC, INC. AND SHALL NOT BE REPRODUCED  
OR TRANSFERRED TO OTHER DOCUMENTS OR  
DISCLOSED TO OTHERS OR USED FOR ANY  
PURPOSE OTHER THAN THAT WHICH IT WAS  
OBTAINED WITHOUT THE EXPRESSED WRITTEN  
CONSENT OF SAMTEC, INC.



520 PARK EAST BLVD, NEW ALBANY, IN 47150  
PHONE: 812-944-6733 FAX: 812-948-5047  
e-Mail info@SAMTEC.com code 55322

DO NOT SCALE DRAWING  
SHEET SCALE: 3:2

DESCRIPTION:  
SMA STR JACK S BULKHEAD, RG178- 50 OHM

DWG. NO.  
SMA-J-C-X-ST-SB2

BY: R MUSSER 04/05/2009 SHEET 2 OF 2