

DESIGNED & DIMENSIONED
IN MILLIMETERS [INCHES]

DO NOT
SCALE FROM
THIS PRINT

SMA-P-C-X-RA-CA1

- GENDER
-P: PLUG
- TYPE
-C: CABLE
- TERMINATION
-CA1: CABLE
(RG174 OR RG316)
- ORIENTATION
-RA: RIGHT ANGLE
- PLATING SPECIFICATION
-H: HEAVY GOLD (SEE NOTES 7 & 8)
(SUB-SMA-P-C-H-RA-CA1)
(SMA-FER-001-F)
(SMA-CAP-001-F)

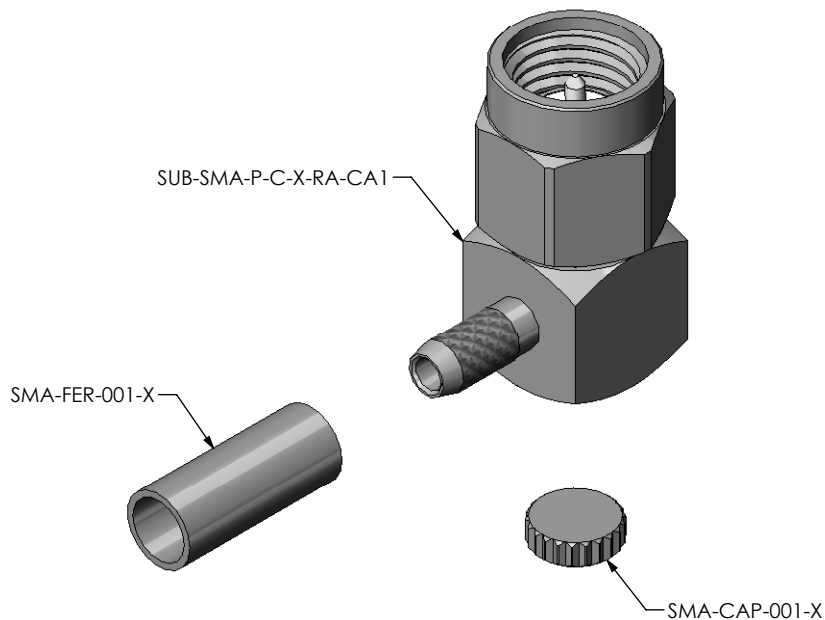
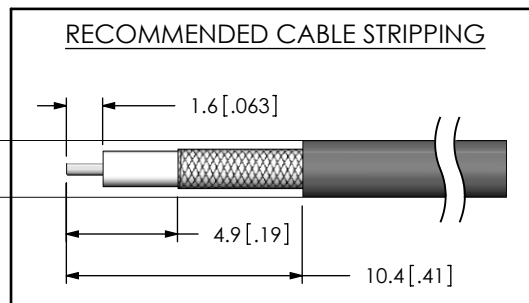


FIG.1
SMA-P-C-X-RA-CA1 SHOWN



NOTES:

1. $\text{\textcircled{C}}$ REPRESENTS A CRITICAL DIMENSION.
2. CENTER CONTACT PUSHOUT FORCE: 26.69 N [6 LB] MIN.
3. SEE SHEET 3 FOR TERMINATION INFORMATION.
4. NOTE DELETED.
5. PRODUCT TO BE PACKAGED PER PACKAGING STANDARD CO-HD-WI-3040-M.
6. RoHS COMPLIANT.
7. PLATING: -F: .000003" MIN. GOLD OVER .000050" MIN. NICKEL.
-H: .000030" MIN. GOLD OVER .000050" MIN. NICKEL.
8. ASSEMBLY PLATING DESIGNATIONS:
-H: (CENTER CONTACT)-H
(OUTER CONTACT) -F
(REMAINING METAL PARTS) -F

THIS PRODUCT MANUFACTURED WITH LEAD-FREE PROCESSING

F:\DWG\MISC\MKTG\SMA-P-C-X-RA-CA1-MKT.SLDDRW

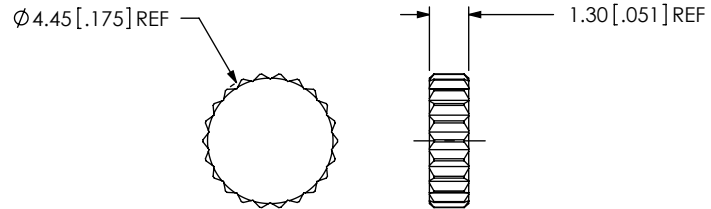
UNLESS OTHERWISE SPECIFIED, DIMENSIONS ARE IN MILLIMETERS [INCHES]. TOLERANCES ARE:
DECIMALS ANGLES
.X: ± 0.3 [.01] 2°
.XX: ± 0.13 [.005]
.XXX: ± 0.051 [.0020]

PROPRIETARY NOTE
THIS DOCUMENT CONTAINS INFORMATION CONFIDENTIAL AND PROPRIETARY TO SAMTEC, INC. AND SHALL NOT BE REPRODUCED OR TRANSFERRED TO OTHER DOCUMENTS OR DISCLOSED TO OTHERS OR USED FOR ANY PURPOSE OTHER THAN THAT WHICH IT WAS OBTAINED WITHOUT THE EXPRESSED WRITTEN CONSENT OF SAMTEC, INC.

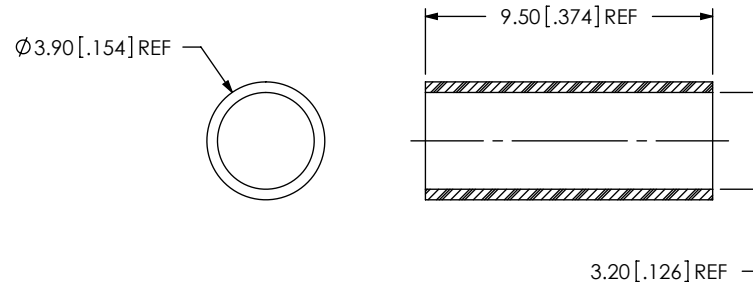
samtec
520 PARK EAST BLVD, NEW ALBANY, IN 47150
PHONE: 812-944-6733 FAX: 812-948-5047
e-Mail info@SAMTEC.com code 55322

MATERIAL: DO NOT SCALE DRAWING SHEET SCALE: 1:0.333333
SHELL,FERRULE,CAP: BRASS
CONTACT: BRASS
DIELECTRIC: PTFE

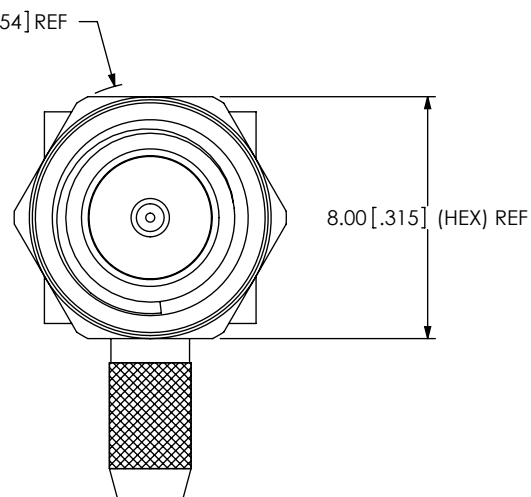
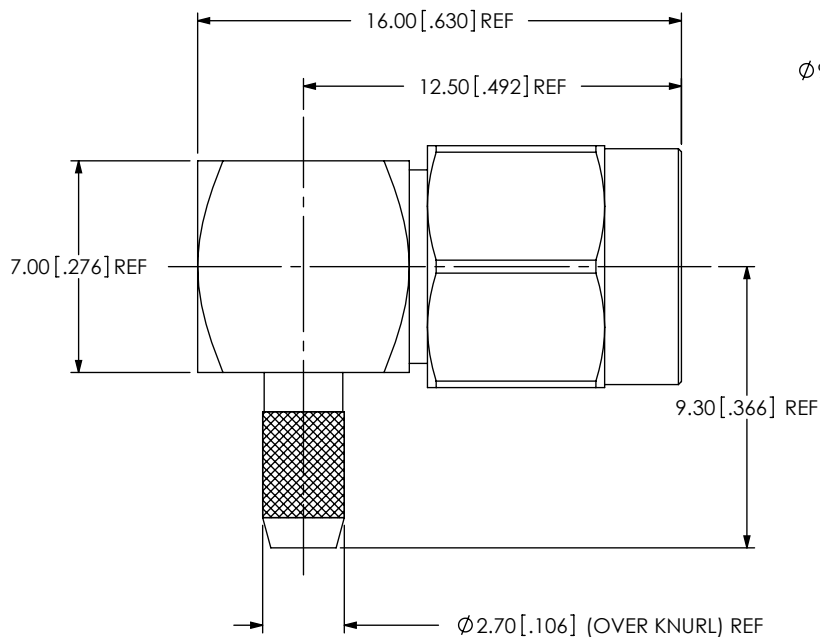
DESCRIPTION:
SMA RIGHT ANGLE CABLE PLUG, RG174 & RG316- 50 OHM
DWG. NO. **SMA-P-C-X-RA-CA1**



SAMTEC PART NUMBER	ITEM
SMA-CAP-001-X	CAP



SAMTEC PART NUMBER	ITEM
SMA-FER-001-X	OUTER FERRULE




SAMTEC PART NUMBER	ITEM
SUB-SMA-P-C-X-RA-CA1	SUB ASSEMBLY

F:\DWG\MISC\MKTG\SMA-P-C-X-RA-CA1-MKT.SLDDRW

PROPRIETARY NOTE
 THIS DOCUMENT CONTAINS INFORMATION CONFIDENTIAL AND PROPRIETARY TO SAMTEC, INC. AND SHALL NOT BE REPRODUCED OR TRANSFERRED TO OTHER DOCUMENTS OR DISCLOSED TO OTHERS OR USED FOR ANY PURPOSE OTHER THAN THAT WHICH IT WAS OBTAINED WITHOUT THE EXPRESSED WRITTEN CONSENT OF SAMTEC, INC.

DO NOT SCALE DRAWING

SHEET SCALE: 4:1

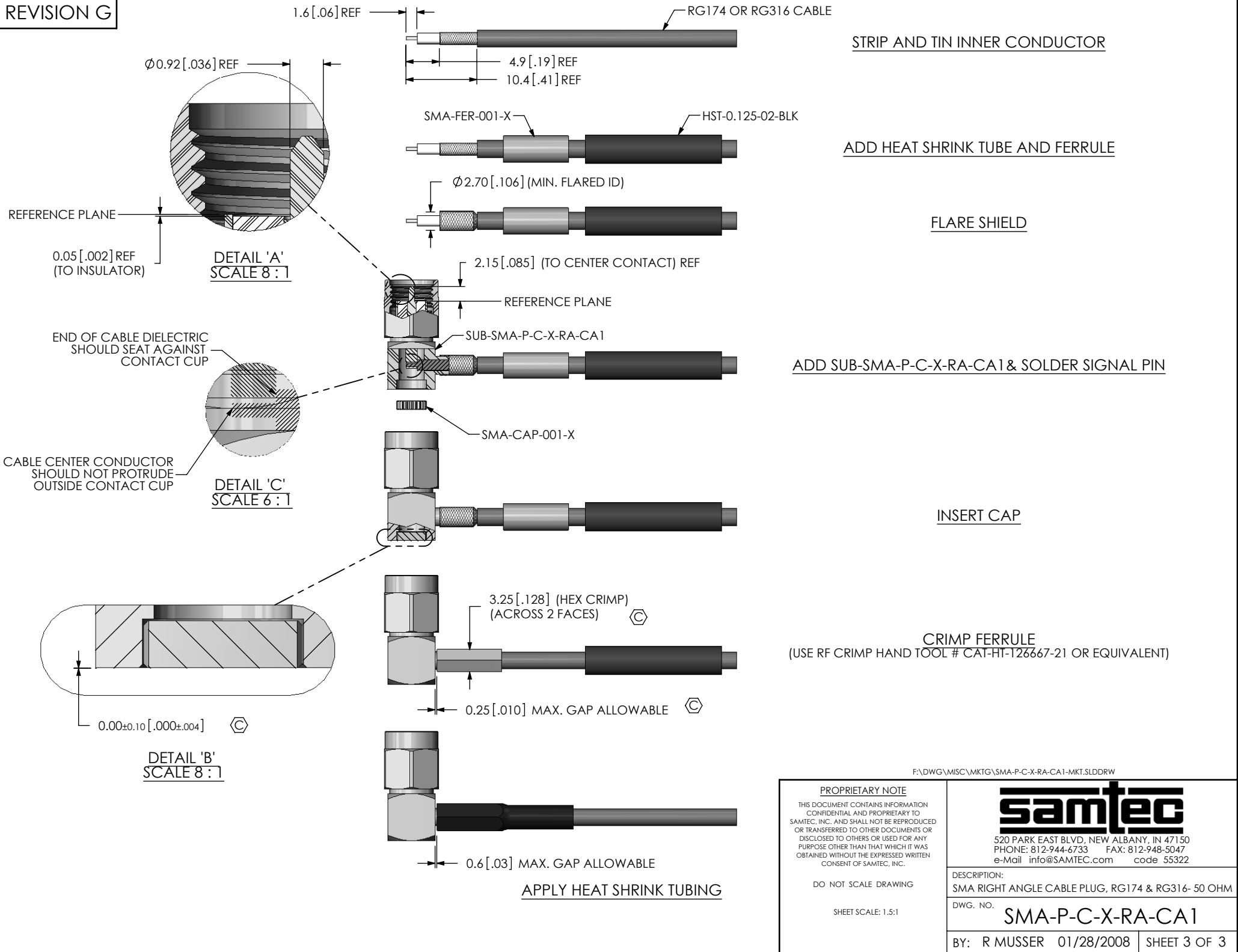


520 PARK EAST BLVD, NEW ALBANY, IN 47150
 PHONE: 812-944-6733 FAX: 812-948-5047
 e-Mail info@SAMTEC.com code 55322

DESCRIPTION:
 SMA RIGHT ANGLE CABLE PLUG, RG174 & RG316- 50 OHM

DWG. NO. **SMA-P-C-X-RA-CA1**

BY: R MUSSER 01/28/2008 SHEET 2 OF 3



STRIP AND TIN INNER CONDUCTOR

ADD HEAT SHRINK TUBE AND FERRULE

FLARE SHIELD


ADD SUB-SMA-P-C-X-RA-CA1 & SOLDER SIGNAL PIN

INSERT CAP

CRIMP FERRULE
(USE RF CRIMP HAND TOOL # CAT-HT-T2667-21 OR EQUIVALENT)

APPLY HEAT SHRINK TUBING

F:\DWG\MISC\MKTG\SMA-P-C-X-RA-CA1-MKT.SLDDRW

<p>PROPRIETARY NOTE THIS DOCUMENT CONTAINS INFORMATION CONFIDENTIAL AND PROPRIETARY TO SAMTEC, INC. AND SHALL NOT BE REPRODUCED OR TRANSFERRED TO OTHER DOCUMENTS OR DISCLOSED TO OTHERS OR USED FOR ANY PURPOSE OTHER THAN THAT WHICH IT WAS OBTAINED WITHOUT THE EXPRESSED WRITTEN CONSENT OF SAMTEC, INC.</p> <p>DO NOT SCALE DRAWING</p> <p>SHEET SCALE: 1.5:1</p>		
	<p>520 PARK EAST BLVD, NEW ALBANY, IN 47150 PHONE: 812-944-6733 FAX: 812-948-5047 e-Mail info@SAMTEC.com code 55322</p>	
	<p>DESCRIPTION: SMA RIGHT ANGLE CABLE PLUG, RG174 & RG316- 50 OHM</p> <p>DWG. NO. SMA-P-C-X-RA-CA1</p>	
<p>BY: R MUSSER 01/28/2008</p>		<p>SHEET 3 OF 3</p>