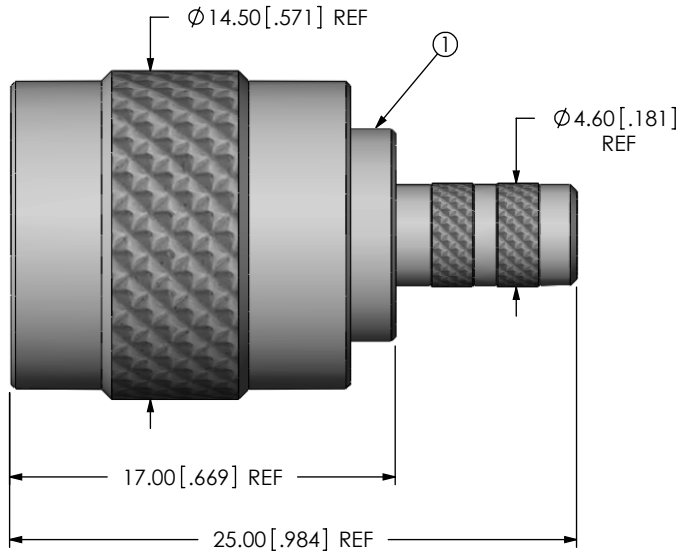


THIS PRODUCT MANUFACTURED WITH LEAD-FREE PROCESSING

DESIGNED & DIMENSIONED IN MILLIMETERS [INCHES]



TNC-P-C-XX-ST-CA1

GENDER
-P: PLUG

TYPE
-C: CABLE

TERMINATION
-CA1: CABLE (RG174 OR RG316)

ORIENTATION
-ST: STRAIGHT

PLATING SPECIFICATION
-GN: GOLD / NICKEL
10μ" Au / 50μ" Ni MIN ON CENTER CONTACT
100μ" Ni MIN ON OTHER
(SEE TABLE 1)

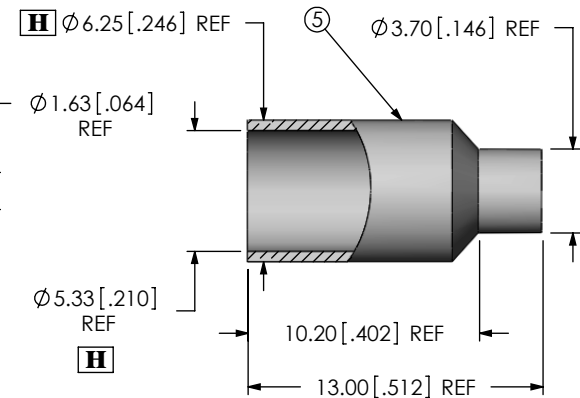
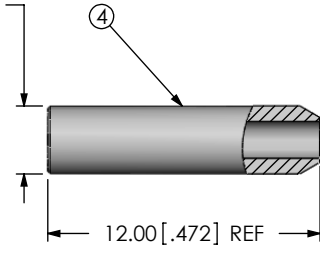
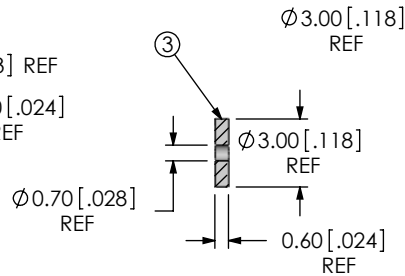
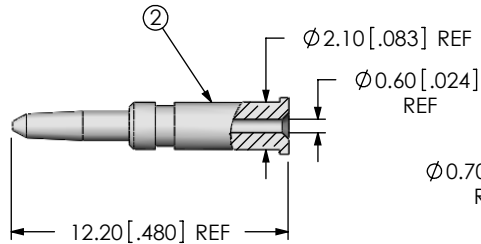


TABLE 1

ITEM	COMPONENT	-GN
1	SUB ASSEMBLY	SUB-TNC-P-C-N-ST-CA1
2	PIN	TNC-PIN-001-G
3	INSULATOR	TNC-INS-001
4	FERRULE 1	TNC-FER-001-N
5	FERRULE 2	TNC-FER-002-N

NOTES:

1. REPRESENTS A CRITICAL DIMENSION.
2. CENTER CONTACT PUSHOUT FORCE: 26.69 N [6LB] MIN
3. NOTE DELETED.
4. NOTE DELETED.
5. PRODUCT TO BE PACKAGED PER PACKAGING STANDARD CO-HD-WI-3040-M
6. NOTE DELETED.
7. NOTE DELETED.
8. NOTE DELETED.

F:\DWG\MISC\MKTG\TNC-P-C-XX-ST-CA1-MKT.SLDDRW

UNLESS OTHERWISE SPECIFIED
DIMENSIONS ARE IN MILLIMETERS [INCHES]

TOLERANCES ARE:

DECIMALS ANGLES

.X: ±0.3 [0.1] 5°

.XX: ±0.13 [0.05]

.XXX: ±0.051 [0.0020]

PROPRIETARY NOTE

THIS DOCUMENT CONTAINS INFORMATION CONFIDENTIAL AND PROPRIETARY TO SAMTEC, INC. AND SHALL NOT BE REPRODUCED OR TRANSFERRED TO OTHER DOCUMENTS OR DISCLOSED TO OTHERS OR USED FOR ANY PURPOSE OTHER THAN THAT WHICH IT WAS OBTAINED WITHOUT THE EXPRESSED WRITTEN CONSENT OF SAMTEC, INC.



520 PARK EAST BLVD., NEW ALBANY, IN 47150
PHONE: 812-944-6733 FAX: 812-948-5047
e-Mail info@SAMTEC.com code 55322

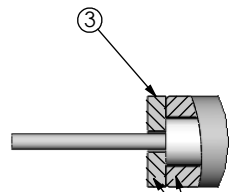
MATERIAL: DO NOT SCALE DRAWING SHEET SCALE: 3:1

SHELL, FERRULE: BRASS
CONTACT: BRASS
DIELECTRIC: PTFE
GASKET: SILICONE

DESCRIPTION:
TNC STRAIGHT CABLE PLUG, RG174 & RG316 - 50 OHM

DWG. NO. TNC-P-C-XX-ST-CA1

BY: R MUSSER 12/19/2007 SHEET 1 OF 2

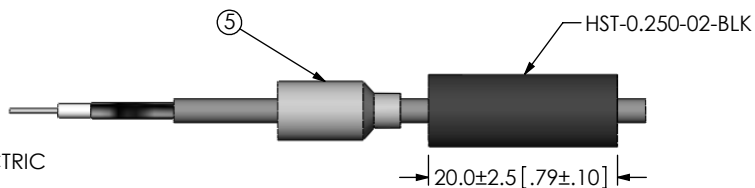


TNC-INS-001 & TNC-FER-001-X
TO BE FLUSH WITH CABLE DIELECTRIC

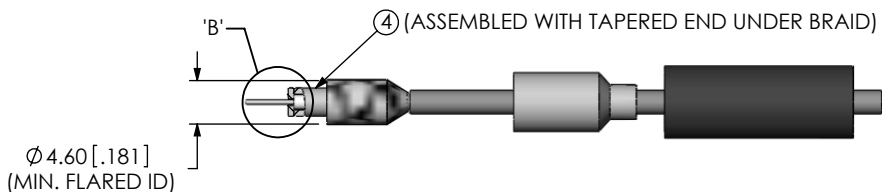
DETAIL 'B'
SCALE 4 : 1



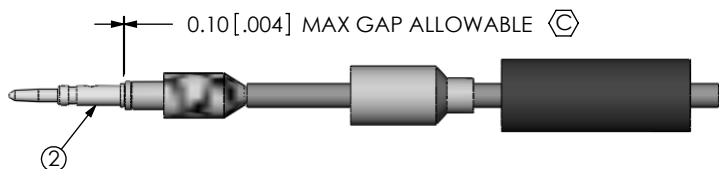
IN-PROCESS 1
STRIP AND TIN INNER CONDUCTOR



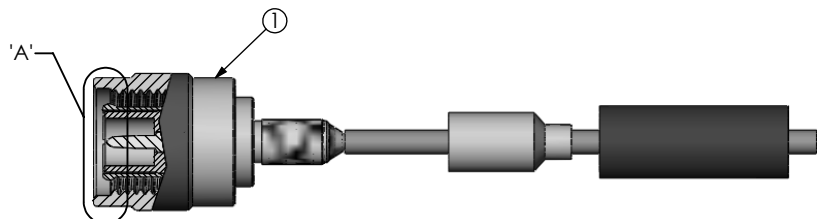
IN-PROCESS 2
ADD HEAT SHRINK TUBE AND FERRULE



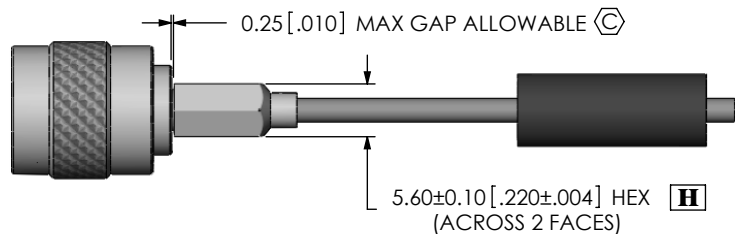
IN-PROCESS 3
FLARE SHIELD, ADD INNER FERRULE AND INSULATOR



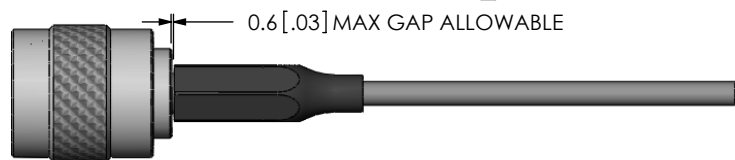
IN-PROCESS 4
SOLDER SIGNAL PIN



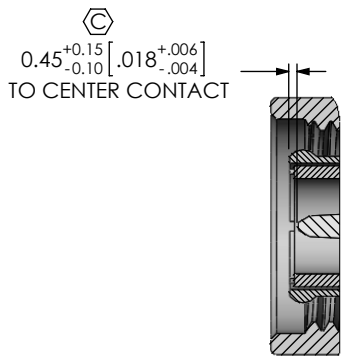
IN-PROCESS 5
ADD SUB-TNC-P-C-X-ST-CA1



IN-PROCESS 6 **H**
CRIMP FERRULE **H**
(USE RF CRIMP HAND TOOL #CAT-HT-126667-21 OR EQUIVALENT)
(USE .213" HEX DIE)



IN-PROCESS 7
APPLY HEAT SHRINK TUBE



DETAIL 'A'
SCALE 2.5 : 1

<p>PROPRIETARY NOTE</p> <p>THIS DOCUMENT CONTAINS INFORMATION CONFIDENTIAL AND PROPRIETARY TO SAMTEC, INC. AND SHALL NOT BE REPRODUCED OR TRANSFERRED TO OTHER DOCUMENTS OR DISCLOSED TO OTHERS OR USED FOR ANY PURPOSE OTHER THAN THAT WHICH IT WAS OBTAINED WITHOUT THE EXPRESSED WRITTEN CONSENT OF SAMTEC, INC.</p>		
	<p>520 PARK EAST BLVD., NEW ALBANY, IN 47150 PHONE: 812-944-6733 FAX: 812-948-5047 e-Mail: info@SAMTEC.com code 55322</p>	
	<p>DO NOT SCALE DRAWING</p> <p>SHEET SCALE: 1:0.8</p>	<p>DESCRIPTION: TNC STRAIGHT CABLE PLUG, RG174 & RG316 - 50 OHM</p> <p>DWG. NO. TNC-P-C-XX-ST-CA1</p>
<p>BY: R MUSSER 12/19/2007</p>		<p>SHEET 2 OF 2</p>