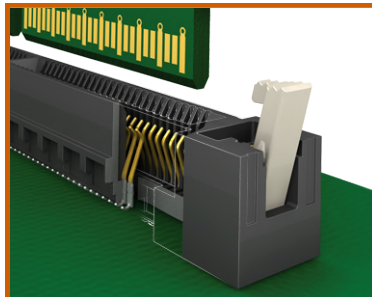
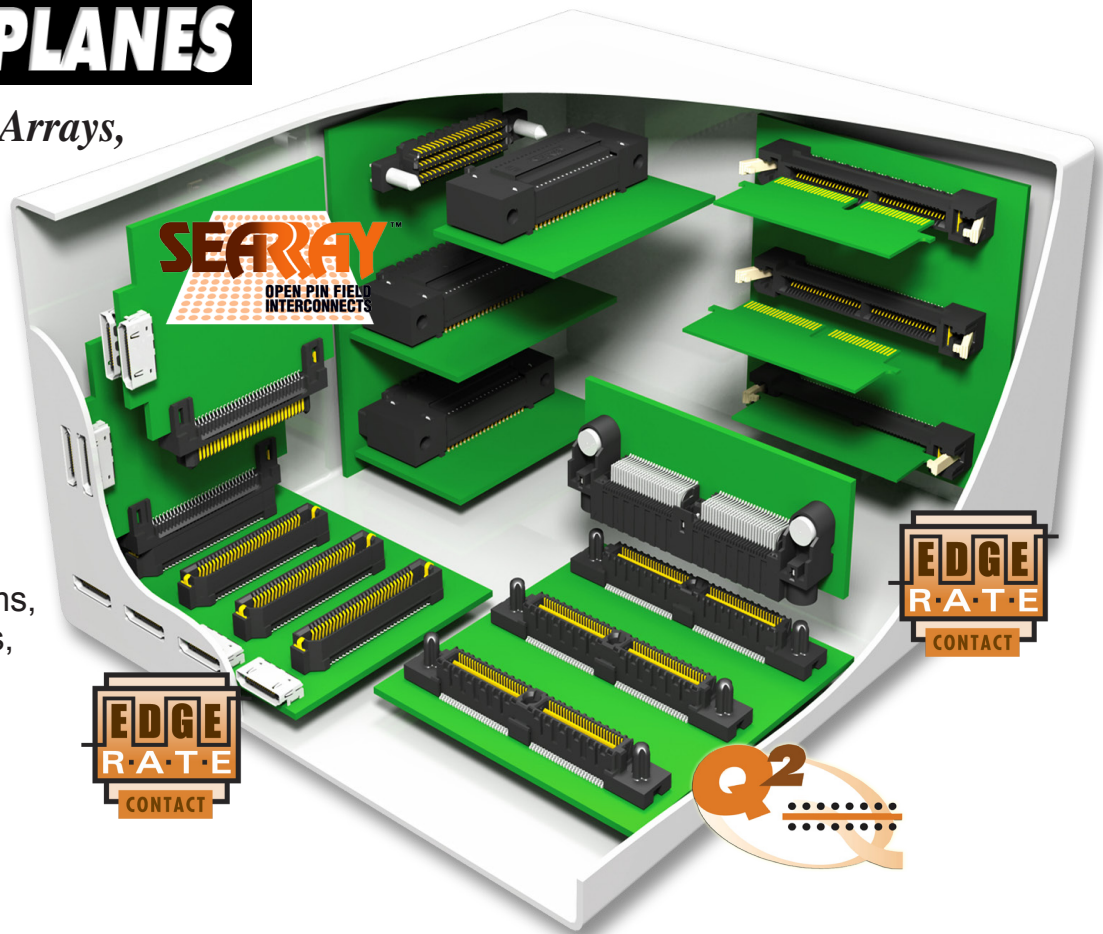


MICRO BACKPLANES

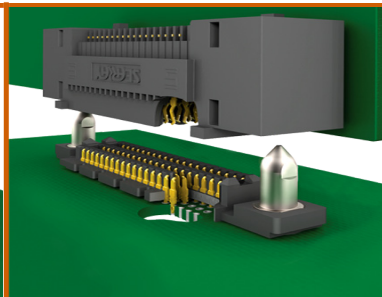
Edge Card, High Density Arrays, Dual Row Strip Systems

Samtec Micro Backplane interconnects are ideal for multiple board stacking, high density, and high speed applications. They can be used to maximize panel density, achieve I/O flexibility, and increase packaging efficiency. Design options include rugged contact systems, keying and alignment features, micro pitch products, high density, right angle, and edge mount systems.



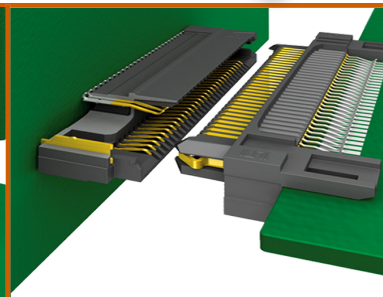
Edge Card Sockets

The [HSEC8](#) is a high speed, .8mm pitch edge card socket. The Edge Rate™ contacts provide rugged, high speed interfaces. The HSEC8 Series is rated at 8 GHz/ pin in single-ended configurations, and 10.5 GHz / pair in differential pair designs, at -3 dB insertion loss. The HSEC8 accepts .062" (1.6) thick PCBs and is available with an optional board locking system.



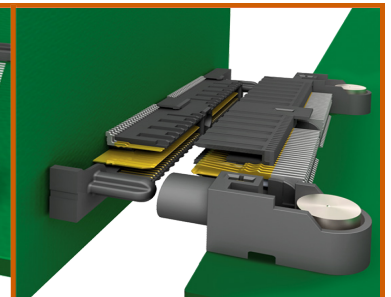
High Density Systems

[SEARAY™](#) is a high density, 050" (1.27mm) pitch grid array. The open pin field design, with up to 500 I/O's and up to 10 rows of pins, maximizes routing flexibility. The right angle arrays are designed to reduce skew and impedance mismatch. Popular options include guide posts, solder charge tails, and pressfit tails (available soon). Popular products include [SEAM](#), [SEAF](#), [SEAF-RA](#)



Rugged Contact System

The [ERM8/ERF8](#) is a rugged, high speed .8mm pitch two-piece interconnect system. The Edge Rate™ contact system is robust and allows for "zippering" during mating and unmating; it is rated at 10.5 GHz / pin at -3dB insertion loss. The ERM8, ERF8 system is available in vertical, right angle, and edge mount designs, with optional latching features to increase retention, and with optional extended guide posts.



Ground Plane Systems

Q2, the [QMS](#), [QFS](#) Series, is a high speed header and socket system, on .635mm pitch, featuring an integral power/ground plane between the two rows of pins. Q2™ products have increased insertion depth for rugged applications, are available in right angle and edge mount configurations, and are available with optional locking screws and guide posts. Right angle systems are rated at 8 GHz / pin at -3dB insertion loss.

Click [here](#) to see the complete Micro Backplane Design Guide