

AccliMate™ Bayonet Sealed Circular Cable Systems



AccliMate™ Bayonet IP68 Sealed Circular Systems: Ultimate Design Flexibility

Quick turn, mix-and-match options on bundled cable, shell size and material, contact size and quantity, contact placement, wire gauge, and keying options.

Product Features:

- IP68 rated for dust and waterproof sealing
- Three shell sizes: 12mm, 16mm, and 22mm
- Three material options: overmold, plastic, and metal
- Multiple combinations of inserts and custom bundled cable
- Signal, power, RF and combinations available
 - .5mm – 28 AWG standard, 26 AWG – 30 AWG custom
 - 1mm – 24 AWG standard, 20 AWG – 24 AWG custom
 - 1.5mm - 16 AWG standard, 14 AWG – 18 AWG custom
 - RF – RG 316 Coming Soon!
- Bayonet latching with four standard keying options
- Bayonet-style lock
- Metal and plastic Field Termination Kits
- Dust caps
- Highly reliable clip shell contacts

Service Features:

- Complete systems
- Both cable and panel assemblies
- Custom quick-turn bundled cable
- Low 100 ft. minimum of cable
- Fully customizable inserts
- Hundreds of designs available
- Ships in 10 - 14 days
- Low minimum order quantities



For more information:
samtec.com/acclimate
800-SAMTEC-9 or email
acclimate@samtec.com

samtec



ACX-12 Series

Leadstyle	Inserts
-01	(4) 1mm pins
-02	(5) 1mm pins
-03	(6) .5mm pins
-04	(8) .5mm pins
-05	(2) 1mm pins and (4) .5mm pins



ACX-16 Series

Leadstyle	Inserts
-01	(14) .5mm pins
-02	(10) 1mm pins
-03	(4) 1.5mm pins
-04	(3) RF pins
-05	(3) 1mm pins and (1) RF pin
-06	(2) 1.5mm pins and (8) .5mm pins
-07	(2) RF pins and (8) .5mm pins

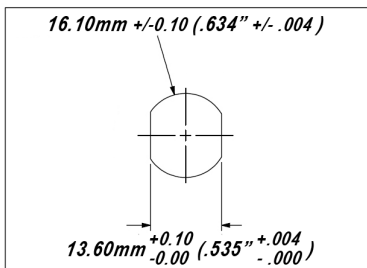


ACX-22 Series

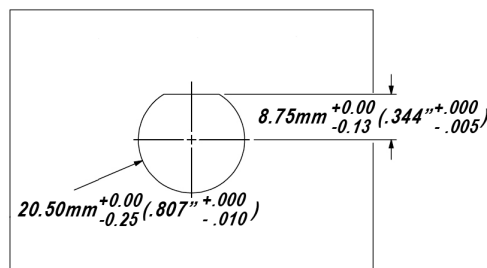
Leadstyle	Inserts
-01	(30) 1mm pins
-02	(20) 1mm pins
-03	(8) 1.5mm pins
-04	(8) RF pins
-05	(4) 1.5mm pins and (15) 1mm pins
-06	(4) RF pins and (16) 1mm pins

Panel Openings

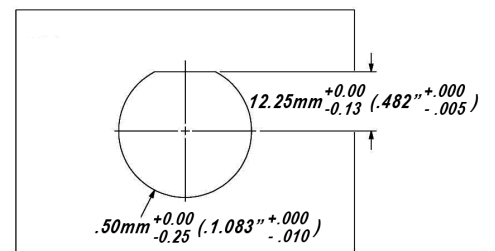
ACR-12 Series



ACR-16 Series

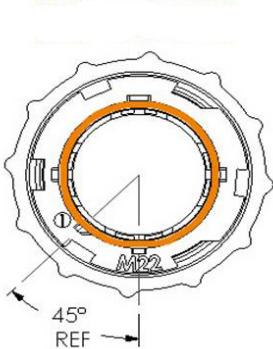


ACR-22 Series

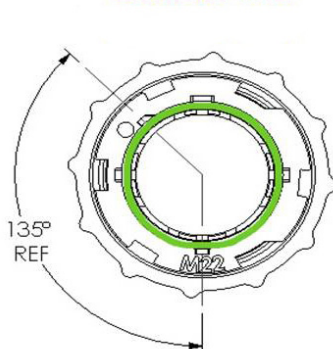


Keying Options

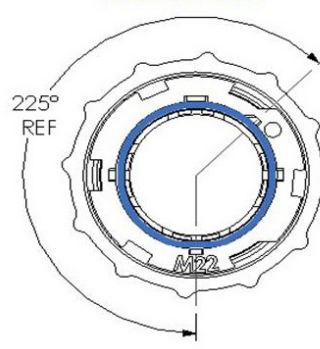
ORANGE KEY RING



GREEN KEY RING



BLUE KEY RING



YELLOW KEY RING

