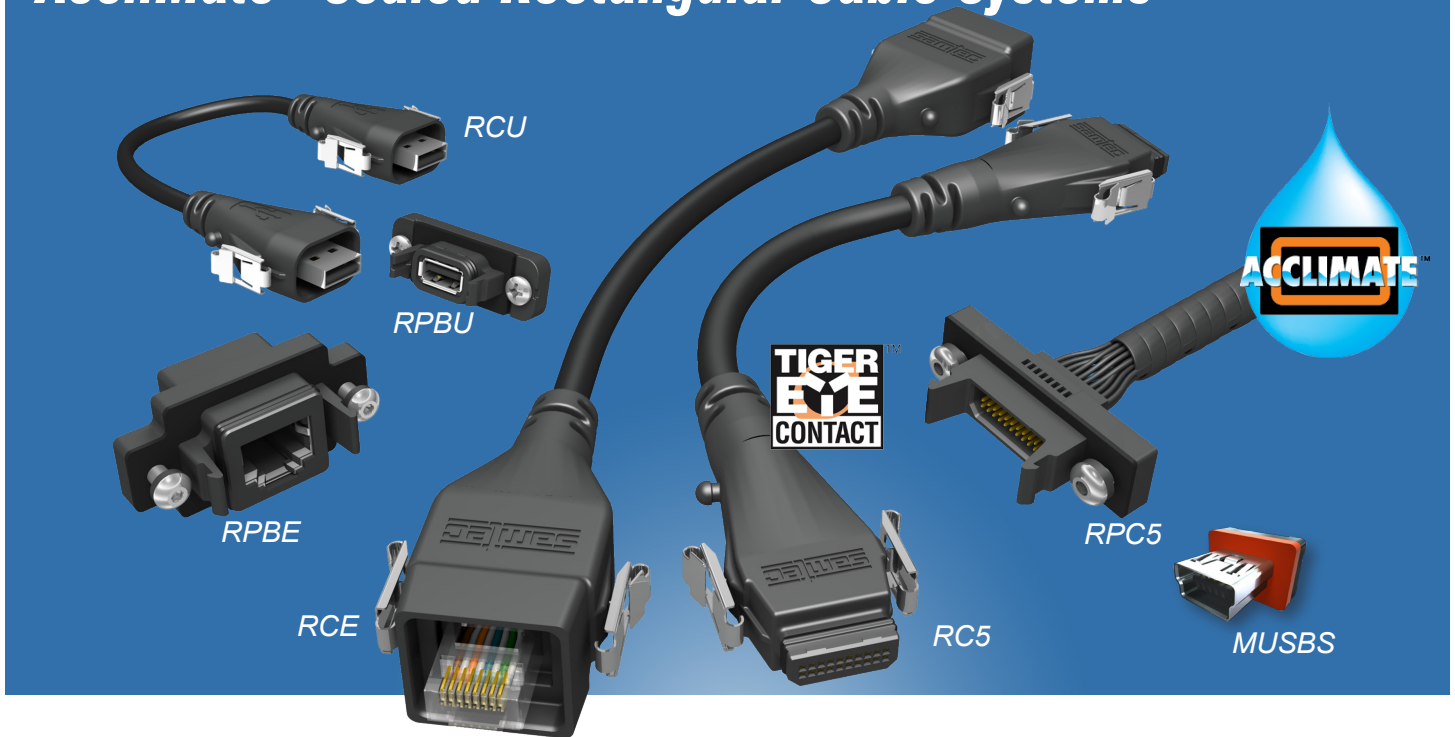


AccliMate™ Sealed Rectangular Cable Systems



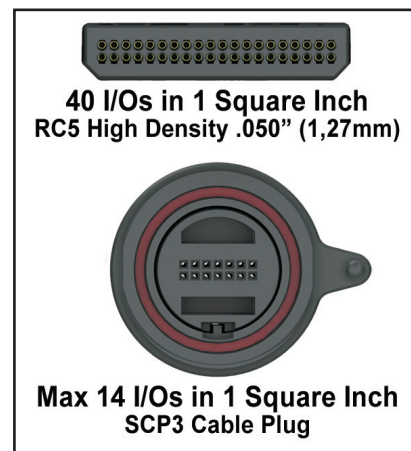
More pins, less space, and IP68 sealed for dust and waterproof sealing

Samtec AccliMate™ sealed rectangular cable plugs and receptacles, with a silicon seal that meets IP68 specifications for dust and waterproof sealing, are ideal for industrial, rugged, and other harsh environments. The rectangular design saves space compared to traditional circular interconnects, making them well-suited to smaller and lower profile applications. A unique push-to-seal positive latching system with audible click makes for easy mating and quick connect / disconnect.

A high density system features Samtec's rugged Tiger Eye™ contacts on .050" (1,27) pitch in a space-saving design. Ethernet systems meet CAT5e and CAT3 specifications and are available in either single or dual port designs. USB systems are available with USB Type A and B and Mini USB B, as well as a vertical Type B port for panel mount applications.

Product Features:

- Unique push to seal latching system – easier mating, quick connect/disconnect, audible click when mated
- Multiple orientations – vertical and rightangle, board and cable mount
- Field Termination Kits – Ethernet only
- Dust caps
- Electrical Specifications and UL Certification*

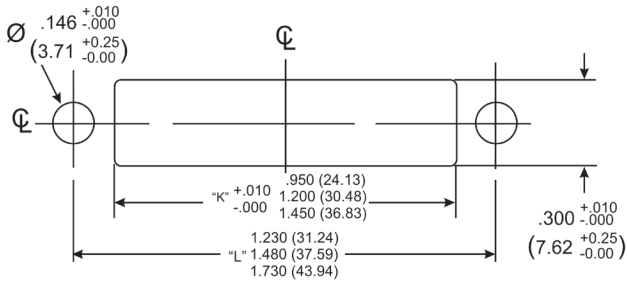


For more information:
samtec.com/acclimate
800-SAMTEC-9 or email
acclimate@samtec.com.


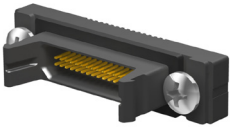
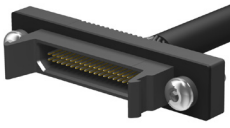
*in testing

samtec

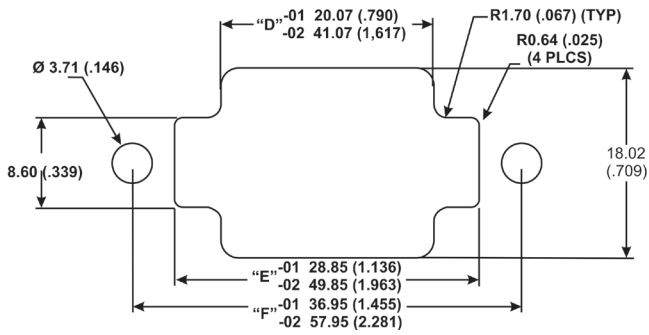
High Density .050" (1,27mm)




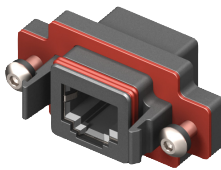
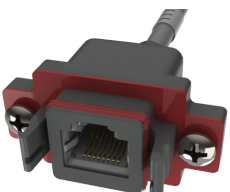
Series
Wire Gauge
IP Rating
Contact
No. I/Os

Cables	Panel Socket	Panel
 RC5 28 AWG IP68 Tiger Eye™ 20 - 40	 RPB5 N/A IP68 Tiger Eye™ 20 - 40	 RPC5 28 AWG IP68 Tiger Eye™ 20 - 40

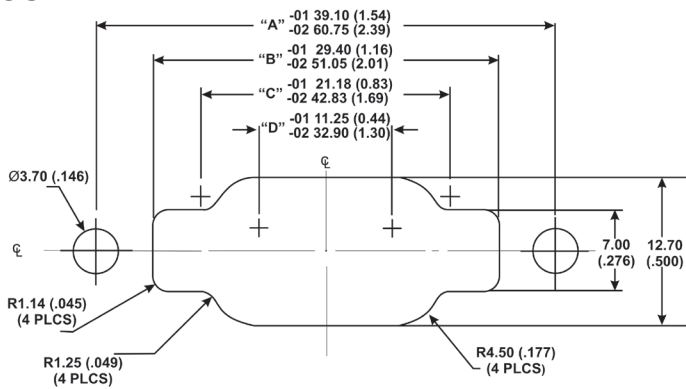
Ethernet






Series
Wire Gauge
IP Rating
Contact

 RCE 24 AWG IP68 RJ45	 RPBE N/A IP68 RJ45	 RPCE 24 AWG IP68 RJ45
--	--	---

USB



Series
Wire Gauge
IP Rating
Contact

 RCU 25/20 AWG IP68 USB	 RPBU N/A IP68 USB	 RPCU 25/20 AWG IP68 USB
--	--	--

